

SOCET GXP®: Spatially Enabled Exploitation (SEE)

SOCET GXP CREATES A DIRECT CONNECTION TO THE ESRI® GEODATABASE

Out in the field where SOCET GXP® image analysis software is used to make quick decisions, efficiency and accuracy are crucial. The SEE module for SOCET GXP improves change detection with automated processes for collecting and reviewing features in a database, eliminating time-consuming searches for hard-copy or archived reports. SEE enables a global audience of analysts and mapping professionals to use common tools to evaluate and share intelligence data more effectively by integrating with the ESRI® geodatabase. In addition, SOCET GXP interacts with Google Earth™, providing analysts and decision makers with easy access to critical information.

SEE, an add-on module for the SOCET GXP application, allows users to draw their routine image analysis graphics. However, instead of exporting the graphics to a shapefile, the graphics automatically populate the ESRI geodatabase. For the first time, image analysts using an electronic light table application have the capability to do temporal queries, which indicate changes at a facility over time. This functionality offers tremendous benefits to analysts, including unprecedented accuracy, quick visual analysis, and effortless change detection.

Users can create, extract, update, and query features and image graphics — such as roads,



buildings, and targets — using a ground coordinate system that records latitude, longitude, and elevation data, eliminating the need for manual registration.

Therefore, images and graphics are always aligned properly on sequential images captured over time — regardless of sensor or software. The data, automatically captured into the ESRI geodatabase, can be viewed in SOCET GXP and Google Earth simultaneously.

Using SOCET GXP SEE tools for discovery, awareness, and detecting changes from one day to the next, analysts can anticipate conditions such as rough terrain or collapsed bridges, and pinpoint operational routes more accurately. SEE also supports MIL STD 2525 graphics, common graphic symbols widely recognized throughout the armed forces, for rapid transfer of intelligence data and optimal situational awareness for mission planning.

SOCET GXP interacts with Google Earth in real time for quick, 3D color visualization, and gives geospatial context to objects of interest. Integration with Google Earth gives users at any level a familiar tool for accessing and evaluating data.

BENEFITS

Built to support Geospatial Knowledge Base and Pallet Driven Exploitation initiatives

Compare features across multiple images for accurate and efficient change detection

Answer critical questions using spatial, attribute, and temporal queries

Ensure graphic consistency over time and precise alignment with imagery

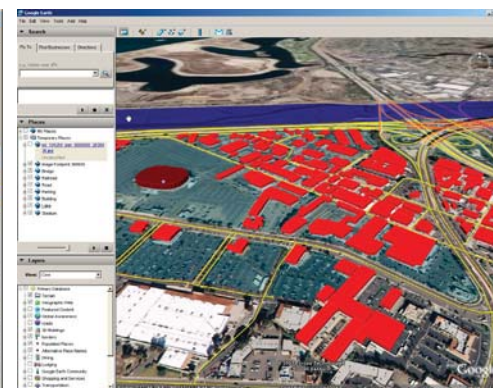
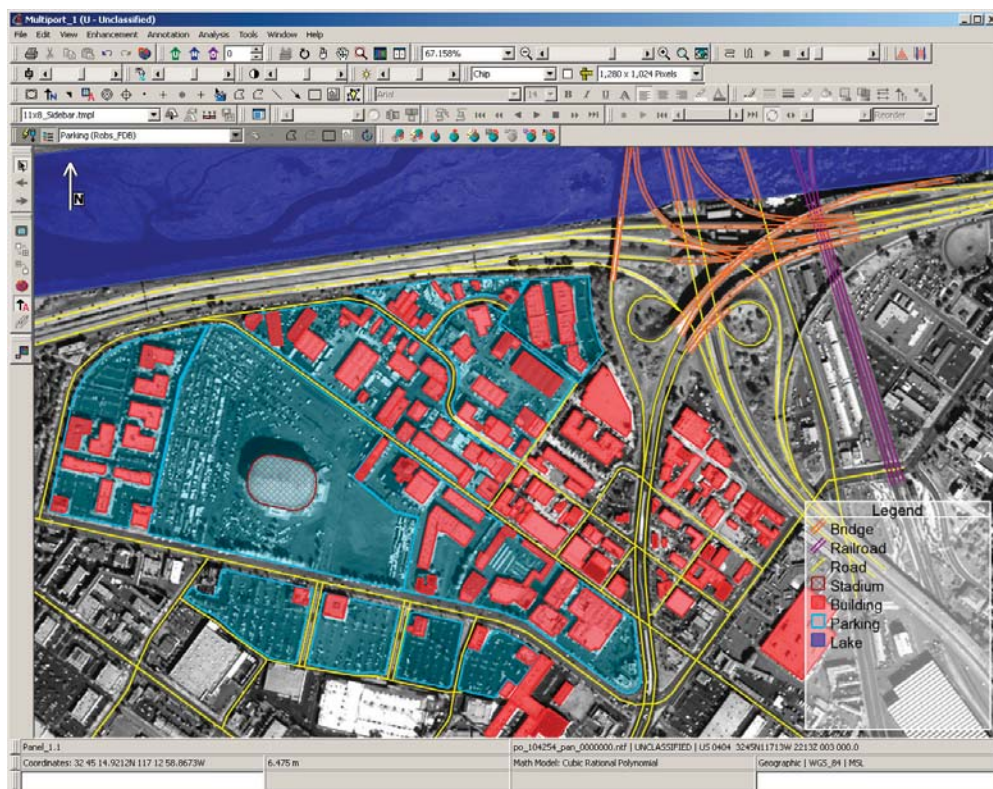
Eliminate time-consuming searches for hard copy or archived reports

Support for MIL STD 2525 graphic symbols

Collect and store data in a ground space coordinate system

Common file formats facilitate quick data retrieval and information sharing

KEY CAPABILITIES



Provides unique temporal analysis capability for quick visualization of multiple images

Allows users to complete ordinary tasks while populating the ESRI® database

Facilitates change detection through automated processes

Offers access to data from the GIS branches; bring in existing ESRI data collection from third-phase military or GIS shop, and view the data in SOCET GXP

▲ Connect to Google Earth™ in real time to locate and preview images geospatially. Toggle feature layers on and off as needed.

Connect to ESRI geodatabase or SOCET SET® feature database

Customize, organize, and display annotation graphics, feature graphics, and shapefiles; sort layers of graphics for animation

Ground space graphic format facilitates quick retrieval and ensures accuracy

◀ View and edit feature layers in SOCET GXP®

FOR MORE INFORMATION, CONTACT:

Americas
Telephone (800) 316-9643 or (703) 668-4385
Fax (703) 668-4381
Email socetgxp.sales@baesystems.com

Europe, Middle East and Africa (EMEA)
Telephone +44 1223 370023
Fax +44 1223 370040
Email socetgxp.emea.sales@baesystems.com

Asia-Pacific
Telephone +61 2 6273 0111
Fax +61 2 6273 0368
Email socetgxp.asia.sales@baesystems.com

www.baesystems.com/gxp

© 2007 BAE Systems. All trademarks used are the property of their respective owners. EXPORT CONTROLLED DATA. These commodities, technology or software are controlled for export in accordance with the U.S. Export Laws. Diversion contrary to U.S. Law is prohibited. Release of this data sheet is approved as of 10/15/07.

GXPSEE 10/07

#26101507