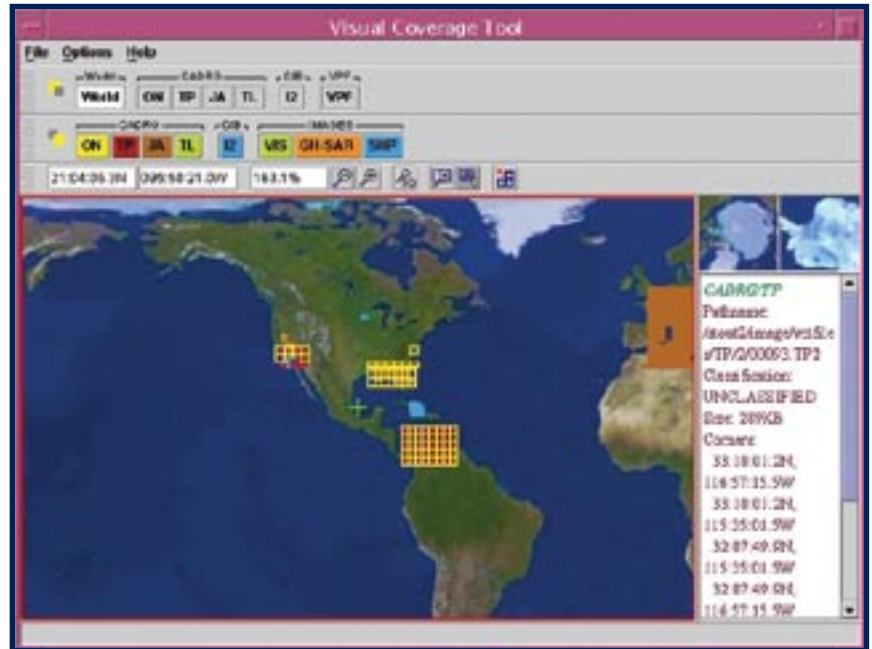


# VITec® Visual Coverage Tool

## Key Functionality

- Visual management of on-line and off-line image and map data
- View color-coded footprints of CADRG, ADRG, DTED, DPPDB, VPF or CIB data
- View image data footprints by sensor type in NITF, TFRD, and GEOTIFF format
- Manage data from CD-ROM, DVD, or 8mm tape or load to on-line storage
- Auto-load images into VITec ELT or VITec PC
- World Map, CADRG, CIB or VPF background options



The VITec Visual Coverage Tool (VCT) allows for visual management of on-line and off-line image and map data used with VITec ELT and VITec PC. Footprints of all the maps and images available on the network are displayed on a World Map, CADRG, CIB or VPF background. This allows the user to easily locate and select data to load into VITec ELT or VITec PC for further exploitation or production. Image and map data can be managed from either CD-ROM, DVD, 8mm tape or loaded to on-line storage.

The background display defaults to the World Map; however, the other backgrounds may also be used depending on the zoom level selected by the user. By entering coordinates, the user can geolocate an area of interest, and that area will appear centered on the display. The selected areas can then be directly exported to VITec ELT and VITec PC.

VCT provides the user a handy visual cue by color-coding the coverage display based upon data type. The following data types are supported:

- ADRG - ARC Digitized Raster Graphics
- CADRG - Compressed ARC Digitized Raster Graphics
- CIB - Controlled Image Base
- DTED - Digital Terrain Elevation Data
- DPPDB - Digital Point Position Data Base
- GEOTIFF
- NITF - National Imagery Transmission Format 2.0 and 2.1
- Shapefile
- TFRD
- VPF - Vector Product Format

---

For more information, please contact the SOCET SET and VITec Sales Office  
11487 Sunset Hills Road Reston VA 20190-5243 USA  
Telephone (800) 316-9643 or (703) 668-4094 Fax (703) 668-4381  
Email [jay.eward@baesystems.com](mailto:jay.eward@baesystems.com) [www.vitec.com](http://www.vitec.com)

**BAE SYSTEMS**