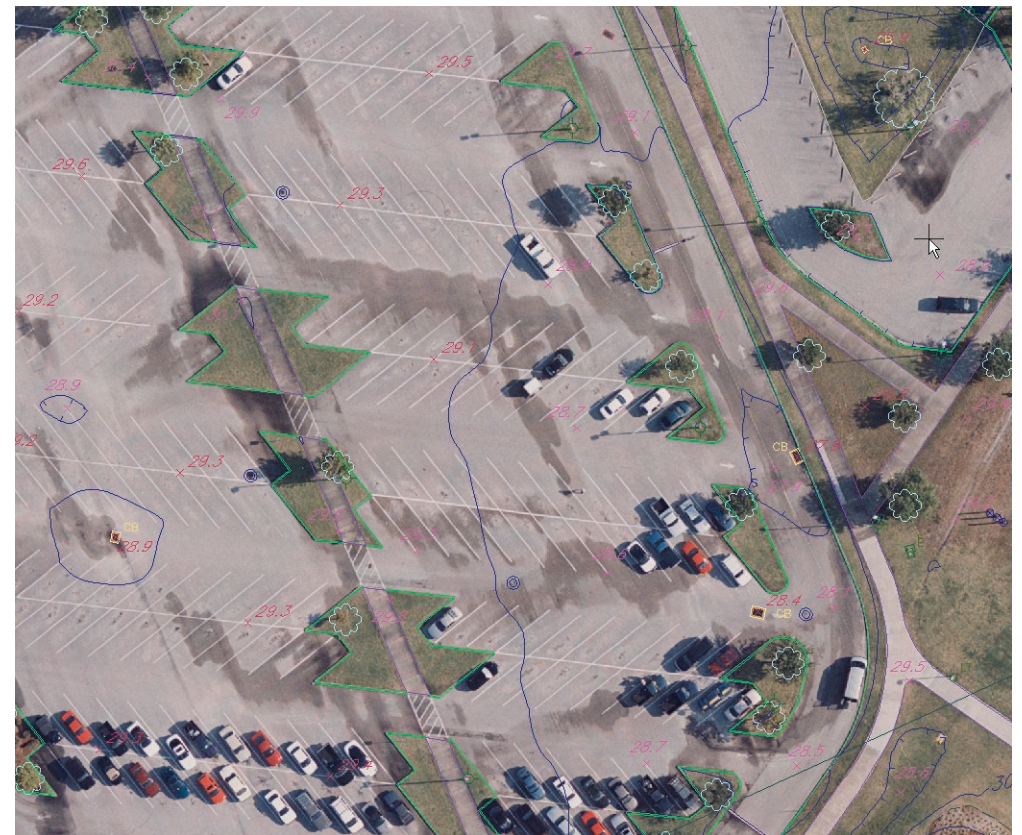


# VrOne® for SOCET SET®

VrOne is a powerful software package for photogrammetric vector collection and editing, designed to maximize ease-of-use and productivity. VrOne is fully integrated with SOCET SET, providing rich feature collection functionality combined with an unsurpassed range of image sources. Tight integration between the products translates into major savings in production time for photogrammetry service companies, national mapping agencies, GIS database creators, and map-making professionals alike.

VrOne for SOCET SET provides today's production photogrammetrists with fast data acquisition, easy editing, powerful data storage and specialized mapping applications. VrOne's vector collection and editing tools complement SOCET SET's robust sensor modeling, stereoscopic viewing and multiple image sources.

Well known and regarded throughout the world, VrOne for SOCET SET is straightforward to learn and operates independently of GIS or CAD systems. It began in the early 1980s when Design Data Incorporated, located in Florida, discerned a need for a highly productive system for feature collection and editing designed with the photogrammetrist in mind. The result was CADMAP, which evolved into a comprehensive package during associations with SRMC, Carl Zeiss, PDS and other photogrammetry production companies. During this period, the product, originally created for analog/analytical stereoplotters and stand-alone edit, was interfaced to SOCET SET. Founded in 2000, Cardinal Systems combined previous knowledge along with new concepts and features to create VrOne (Vector Raster One) and continues to work closely with production-mapping companies to make VrOne the most practical mapping tool available today.



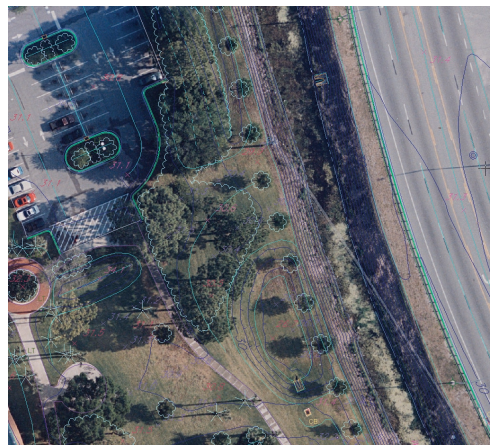
---

## KEY FEATURES AND BENEFITS

---



*Efficient feature collection for large-scale applications*



*Display map features with georeferenced image files*

---

Feature collection and editing combined with SOCET SET; exploits SOCET SET's huge range of image sources, sensor models, datums and coordinate systems. SOCET SET's stereoscopic viewing enables the user to see feature data superimposed on the stereo model, allowing easy checking for accuracy and completeness.

---

Easy to learn and use; efficient design uses minimal number of keystrokes. Function keys and macros improve data collection speed.

---

Interactive, intuitive editing functions are powerful but easy to use. Over 180 commands and 80 mapping applications. Numerous batch applications address many requirements and make unattended global editing easy. Collect data by area or by feature – whichever way the user prefers. Application overlaying allows user to collect data in the order it presents itself, not just by feature type.

---

True 3D database in real-world coordinates stored in double precision. Open 2000 vector and image files at once. 10,001 data layers, 48-character feature codes, text labels up to 512 characters, 256 vector colors, unlimited points on a line, and unlimited file size impose no practical restrictions on the user.

---

Input and output data translators.

---

Extremely flexible and customizable by means of user-defined symbols and line fonts, function keys, macros and object-oriented Python language that allows interactive or batch user programming, from simple routines to entire add-on applications.

---

## FOR MORE INFORMATION CONTACT:

---

Americas  
Telephone (800) 316-9643 or (703) 668-4094  
Fax (703) 668-4381  
Email [socetgxp.sales@baesystems.com](mailto:socetgxp.sales@baesystems.com)

Europe, Middle East and Africa (EMEA)  
Telephone +44 (0) 1223 370023  
Fax +44 (0) 1223 370040  
Email [socetgxp.emea.sales@baesystems.com](mailto:socetgxp.emea.sales@baesystems.com)

Asia-Pacific  
Telephone +61 2 6273 0111  
Fax +61 2 6273 0368  
Email [socetgxp.asia.sales@baesystems.com](mailto:socetgxp.asia.sales@baesystems.com)

[www.socetgxp.com](http://www.socetgxp.com)

© 2006 BAE Systems. All trademarks used are the property of their respective owners. BAE Systems' products are subject to the export control laws and associated regulations of the United States, including but not necessarily limited to the International Traffic in Arms Regulations and Export Administration Regulations. As such, parts of the functionality described herein may be available to certain customers only.

VR0 3/06